



TRANSPORTATION CABINET

Frankfort, Kentucky 40622
www.transportation.ky.gov/

Steven L. Beshear
Governor

Michael W. Hancock, P.E.
Secretary

May 13, 2013

CALL NO. 351
CONTRACT ID NO. 131030
ADDENDUM # 1

Subject: Rockcastle County, JL04 102 1249 015-016
Letting May 24, 2013

- (1) Added - Map - Page 25(a) of 42
- (2) Added - Table - Page 25(b) of 42

Proposal revisions are available at <http://transportation.ky.gov/Construction-Procurement/>.

If you have any questions, please contact us at 502-564-3500.

Sincerely,

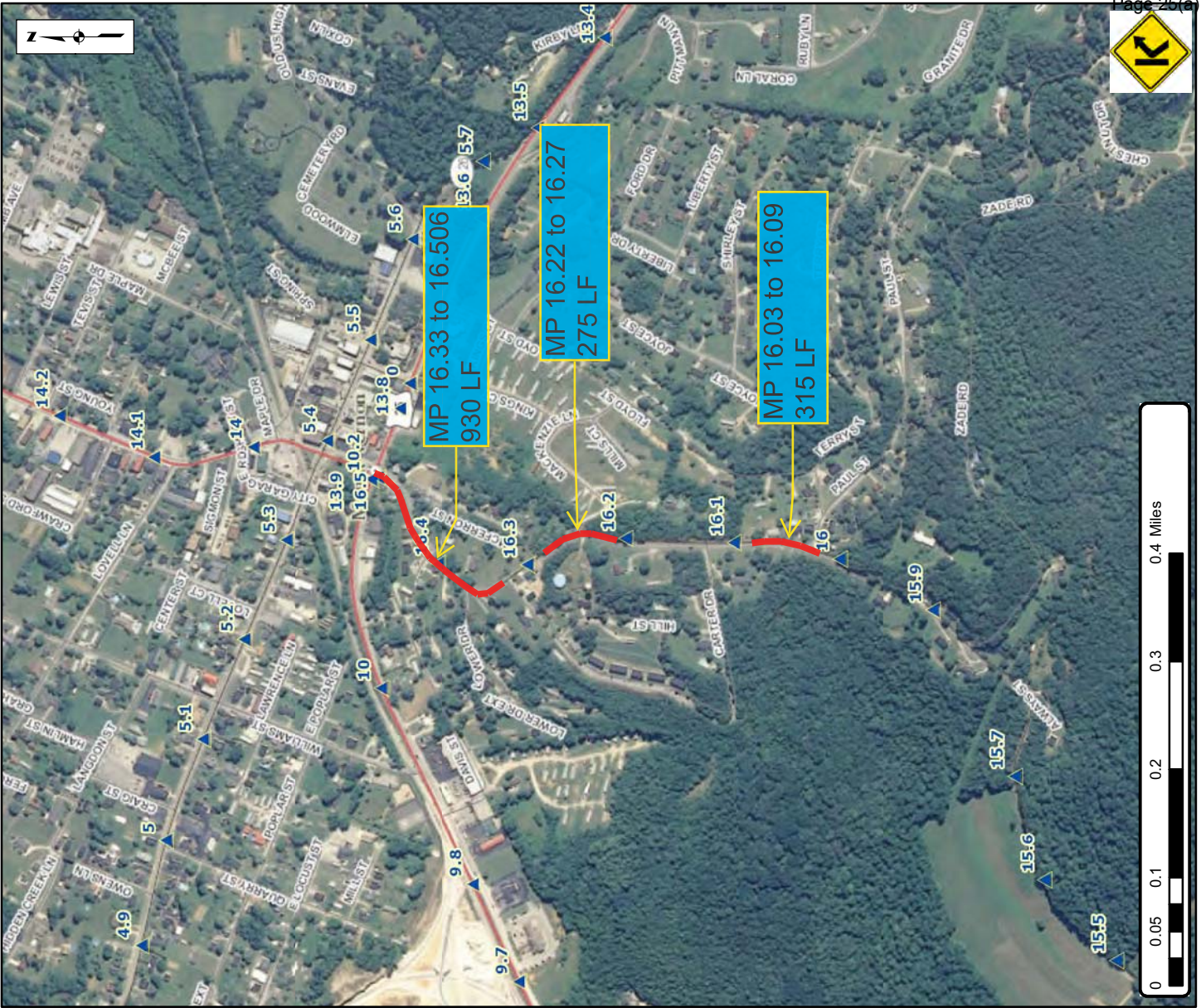
A handwritten signature in blue ink that reads "Ryan Griffith".

Ryan Griffith
Acting Director
Division of Construction Procurement

RG:ks
Enclosures



An Equal Opportunity Employer M/F/D



KY 1249 HFS areas

Date: 12/4/2012

Legend	Truck Routes	Proposed High Friction Surface Overlay
Route Log	COMMACC	
1/10th Mile Calculated Interval	Federal Truck Route	
1/10th Mile Calculated Interval	State Truck Route	
National Highway System (Federal System)	Bridges	
NHS	Zip Code Area	
National Highway System	USGS Quadrangle	
NHS Connector to Airport	KYTC Districts	
NHS Connector to Port Facility	US House District	
NHS Connector to Amtrak Station	KY Senate District	
NHS Connector to Rail/Truck Terminal	KY House District	
NHS Connector to Intercity Bus Terminal		
NHS Connector to Pipeline Terminal		

KYTC
 Division of Planning
 200 Mero St, Suite W-5
 Frankfort, KY 40601
 Phone: (502) 564-7183

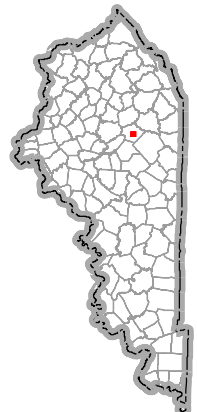


TABLE 1: Quantities for HFS Overlay
KY 1249 Rockcastle County

BMP	EMP	Length (ft)	Each Overlay Lane Width (ft)	HFS Area both lanes (SY)
16.03	16.09	315	8.5	595
16.22	16.27	275	8.5	519
16.33	16.506	930	8.5	1,757
TOTAL:				2,871